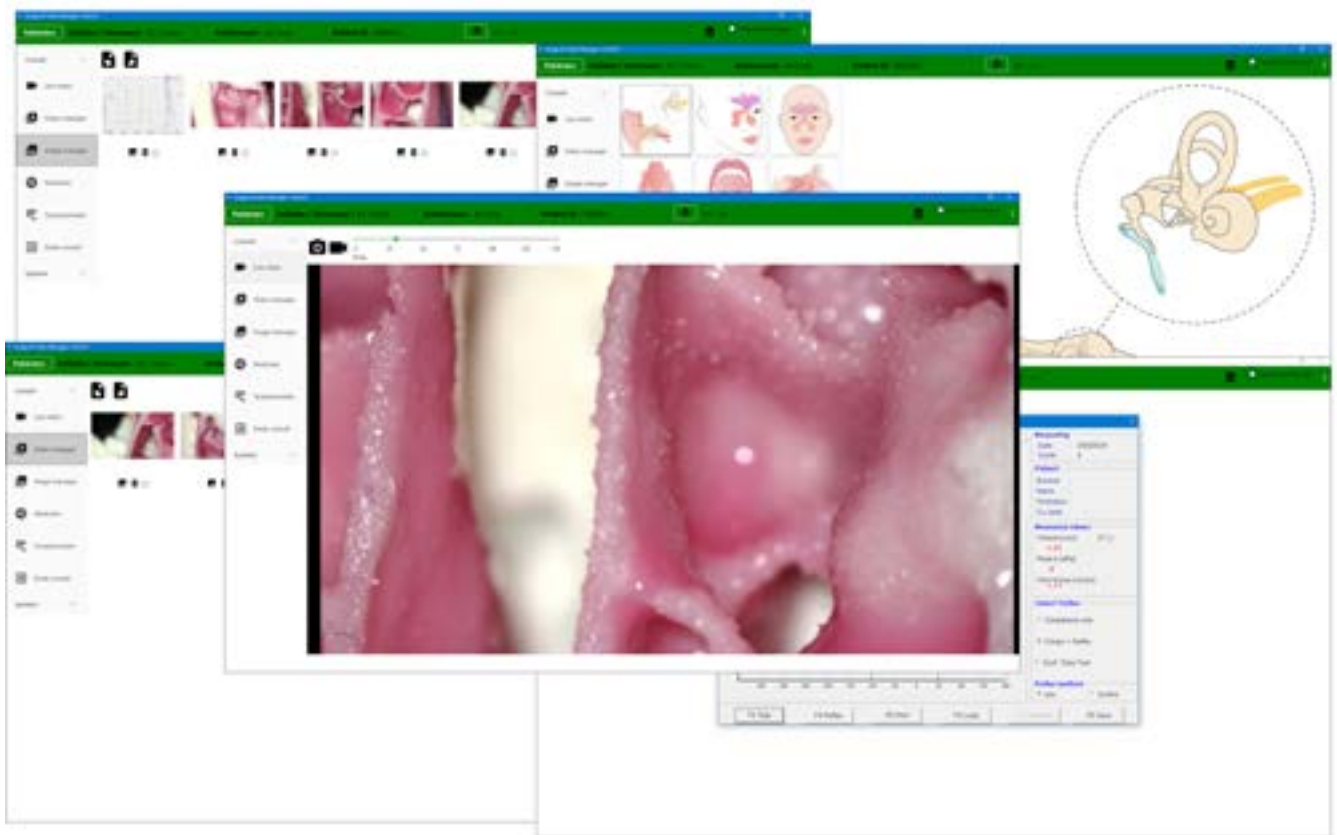


# Image & Video Manager

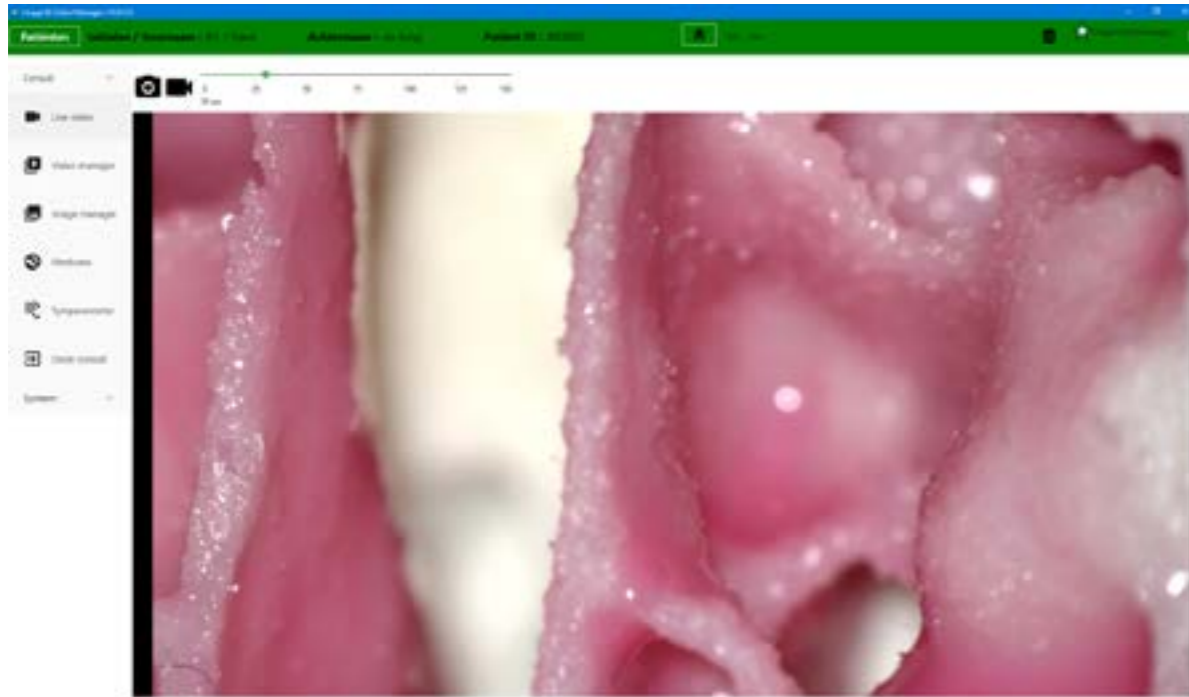
Imaging software developed for ENT



Capturing images and videos has never been this easy

# Image & Video Manager

The Image & Video Manager (IVM) is an imaging software that has been specifically developed for use in ENT. The IVM offers a complete and user friendly software for capturing and storing patient data.



## Simplicity

Years of experience in the field of ENT have ultimately led to a user interface that is centralized around the doctor. The IVM is aimed at quickly and efficiently switching between patients with minimal burden placed on you as a user. The user interface has been kept simple and clean to support you during the examination. The IVM has many features to minimize user input such as operation via a foot pedal to keep your hands free during the examination.

## Capture footage

One of the most important functions of the software is capturing footage. Therefore the home screen will immediately show the live stream of the selected video source in a large format. From this screen you can instantly capture footage using the icons at the top of the screen or the optional foot pedal.

### Instantly capture footage

Capture the essence of an examination through short videos. Set the maximum length of a video with the slider.

## Connect to Hospital Information Systems

The IVM can also be connected to hospital information systems and EPD packages that work with international standards such as DICOM or HL7. The IVM is able to retrieve patient data and directly send captured images or videos to the hospital information system. You always have the right match with your IT systems.

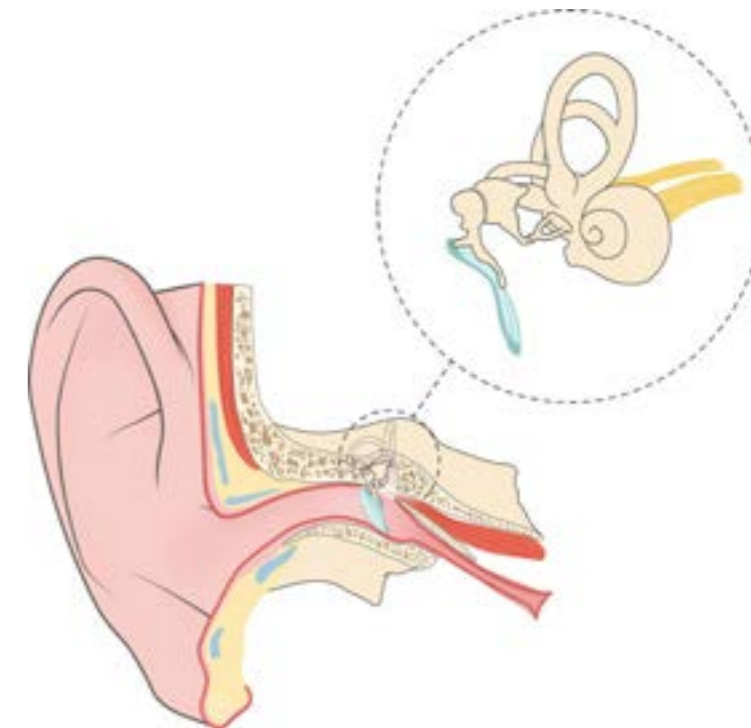


## Mediview

Mediview offers anatomical illustrations of the Ear, Nose and Throat area.

### Anatomical illustrations

These illustrations can be used to highlight and explain particular areas or treatments to the patient.



## Video/Image manager

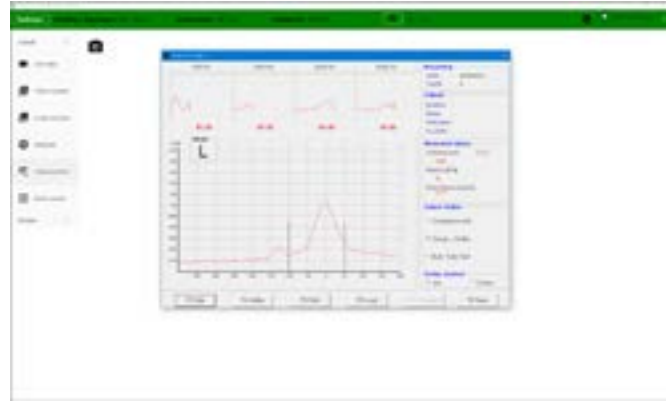
Managing all the footage is very easy with the use of the video manager and image manager. Using these screens it is possible to directly request, edit, annotate, export or delete footage per patient.

Contact us  
sales@meditop.com

We would like to meet you and your company to see how we can help you optimize your work environment.

## Integrate external applications

Integrate external applications such as the tympanometer and take snapshots of the results.



The images are directly stored into the database under the selected patient and can be reviewed at any time.

## ENT treatment units

Together with the ENT treatment units the software forms one whole where the software can automatically switch video sources, select patients, take snapshots and much more.

## IVM forms one whole with the ENT treatment unit

When the video source is removed from the holder on the ENT treatment unit or the microscope is activated, the video source will be automatically selected and is immediately ready for use. The IVM starts automatically when the ENT treatment unit is started, so you are ready for use at the touch of a button.



## Benefits at a glance

- Instant live camera view
- Easy integration with ENT treatment units (MediTop/Entermed)
- Easy switching between functions
- Mostly hands-off operation of the software
- Automatic patient list retrieval
- Automatic storage of images and videos
- Local data (no cloud or Internet connection required)
- Connect to hospital information systems

**Contact us**  
sales@meditop.com

We would like to meet you and your company to see how we can help you optimize your work environment.

## Optional accessories



MONITOR



CAPTURE CARD



USB CAPTURE BOX

## Technical specifications

<b>Operating System</b>	Windows 10 (LTSC/Professional)
<b>Storage (SSD)</b>	Minimum 250GB
<b>Memory (RAM)</b>	Minimum 4GB
<b>Communication</b>	Minimum 1x (USB) RS232 Minimum 1x Ethernet
<b>Power supply</b>	Medical grade power supply (IEC 60601-1)
<b>Database</b>	MS SQL Server
<b>Capture</b>	Capture card (DirectShow compatible)